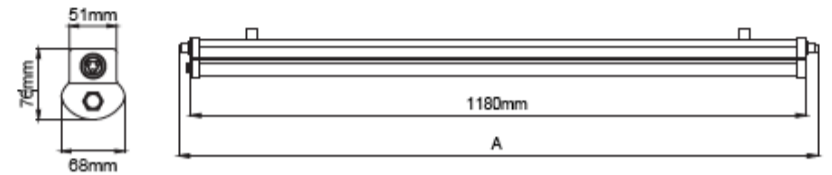
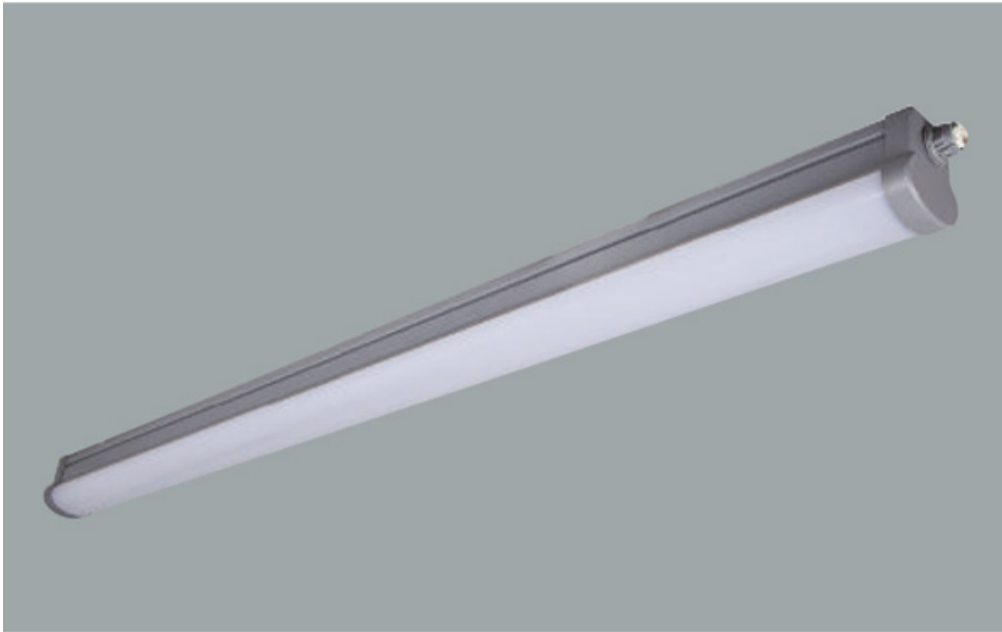


Linear Led Etange

AVOLUX®



Electrical Paramaters

Base Model No.:	LL.I02.LL.19335
Colours:	White, black, silver
Wattage:	20W, 40W
Length:	1224mm
CCT:	2700K - 5000K
IP Rating:	IP 66
CRI:	Ra+80

Features

- Polycarbonate PMMA body.
- Only to be used with electronic led driver.
- Mains voltage: 220-240V/50-60Hz.
- Clever thermal design.
- 1-10v, DALI and switch dimming options available upon request.
- Opal diffuser.
- Over 100%/W efficiency.
- An emergency kit system can be integrated.

Specifications

Model	Wattage	CCT	Lumens	Colour	Beam Angle
LL.I02.LL.19335-WH/3	40W	3000K	2300lm	White	/
LL.I02.LL.19335-WH/3.5	40W	3500K	2400lm	White	/
LL.I02.LL.19335-WH/4	40W	4000K	2500lm	White	/
LL.I02.LL.19335-GR/3	40W	3000K	2300lm	Grey	/
LL.I02.LL.19335-GR/3.5	40W	3500K	2400lm	Grey	/
LL.I02.LL.19335-GR/4	40W	4000K	2500lm	Grey	/
LL.I02.LL.19335-BL/3	40W	3000K	2300lm	Black	/
LL.I02.LL.19335-BL/3.5	40W	3500K	2400lm	Black	/
LL.I02.LL.19335--BL/4	40W	4000K	2500lm	Black	/